



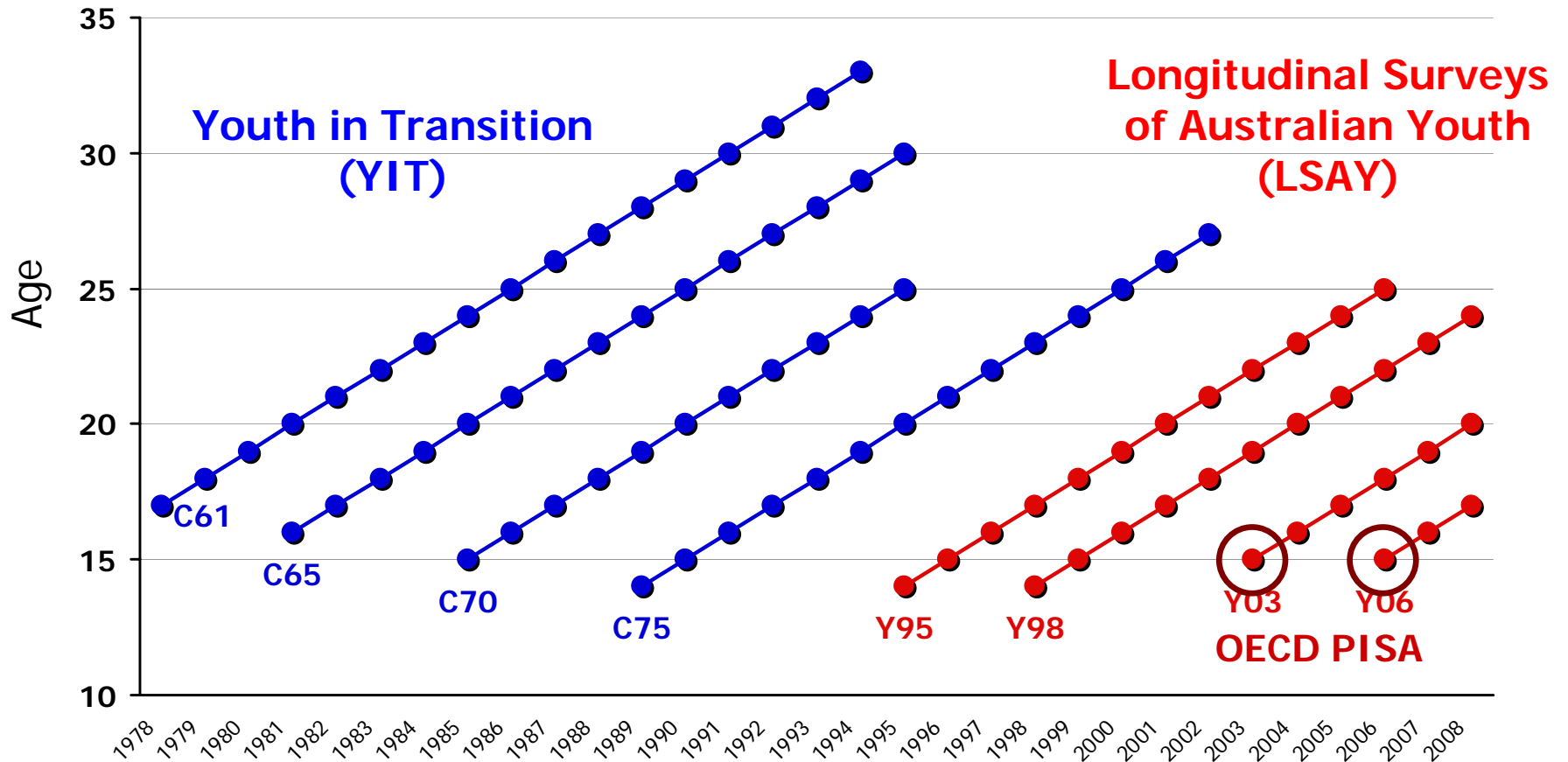
X, Y and Z: Three decades of education, employment and social outcomes of Australian youth

Sheldon Rothman

Kylie Hillman

Australian Council *for* Educational Research

The cohorts



Three generations of outcomes

Education

Employment

Social



Education outcomes

Achievement in
literacy and numeracy

Attitudes to school

Completion of
Year 12

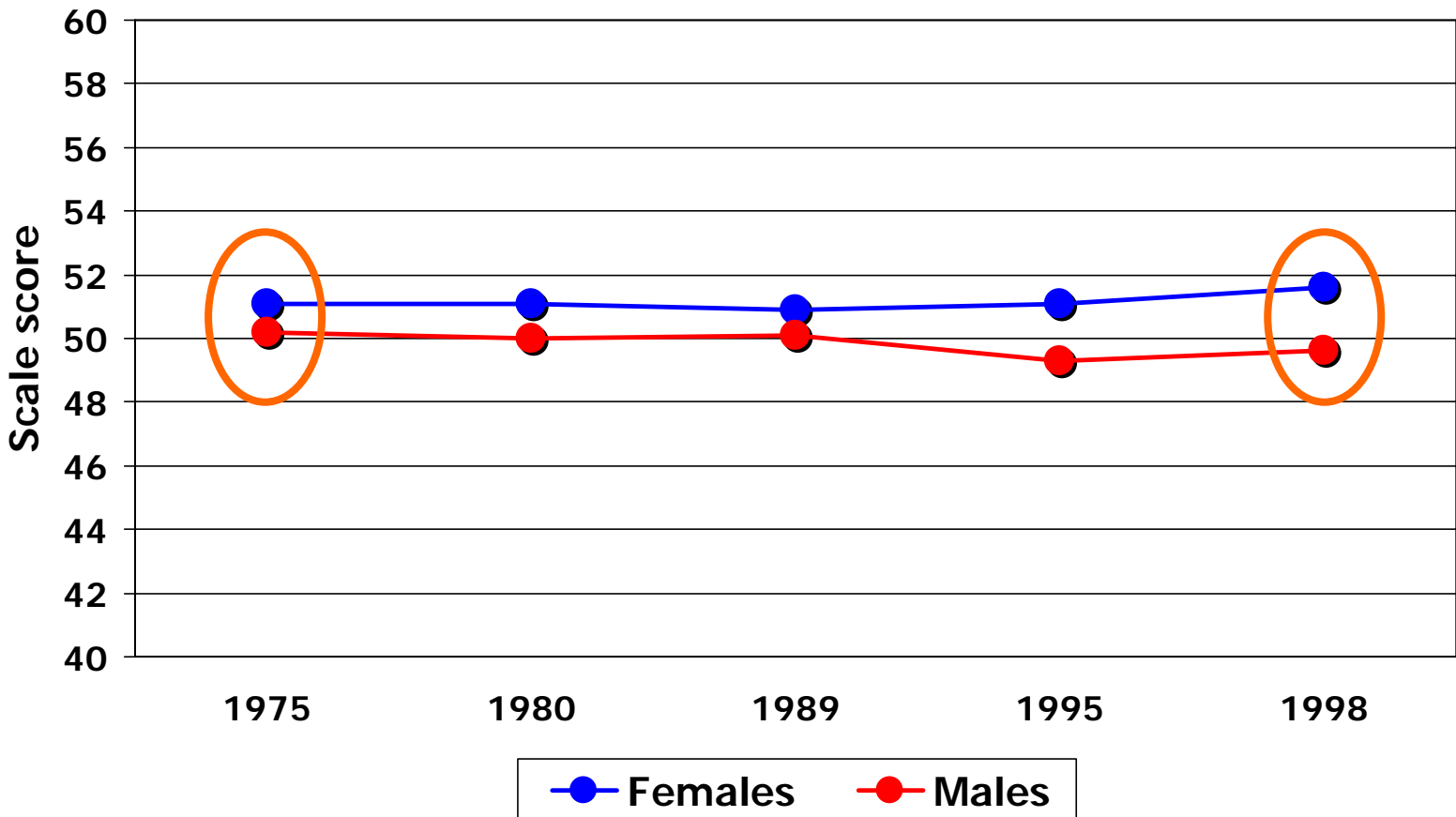
Subject participation

Career advice
in schools

Influences of
geographic location

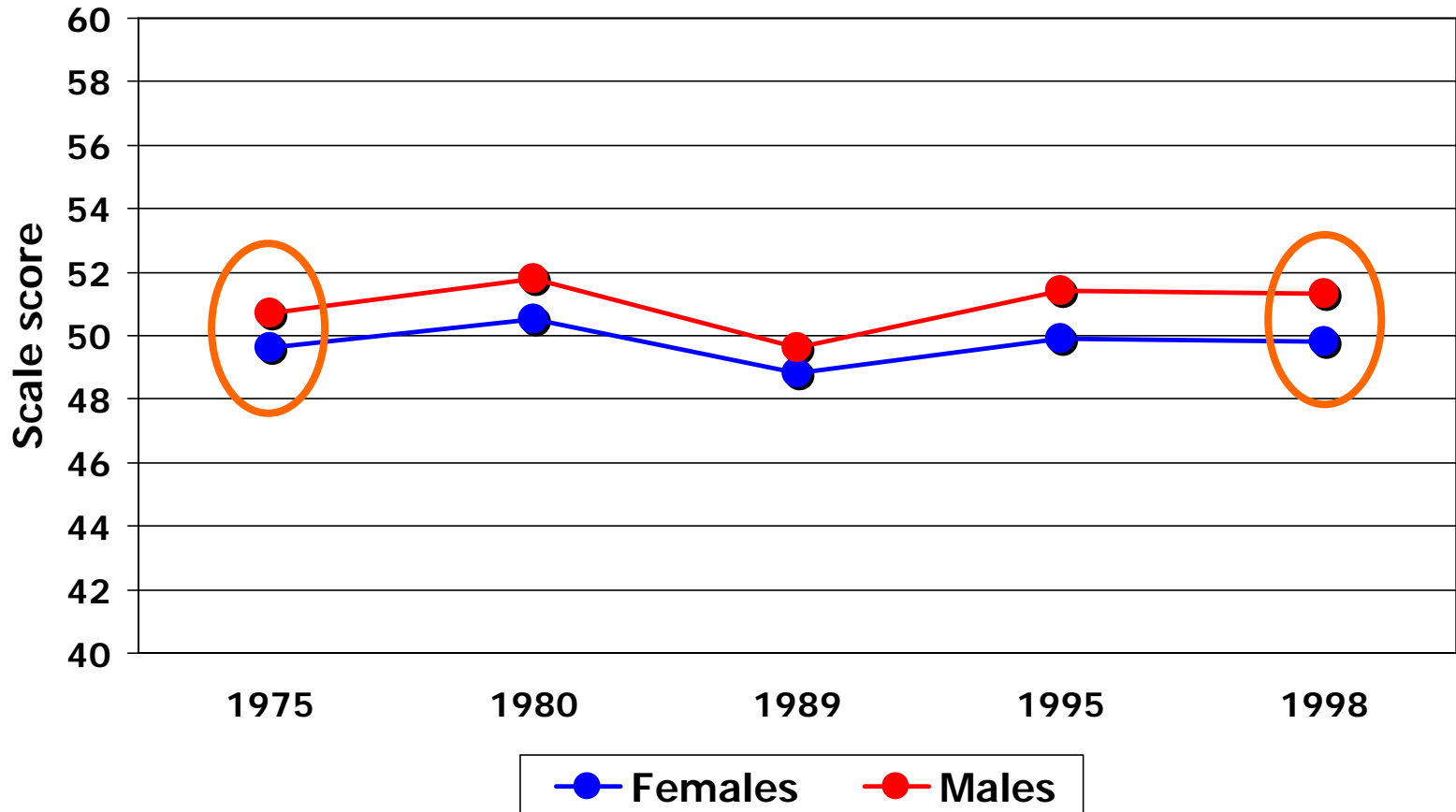


Achievement in literacy among 14 year-olds: 1975-1998





Achievement in numeracy among 14 year-olds: 1975-1998





Education outcomes

Achievement in
literacy and numeracy

Attitudes to school

Completion of
Year 12

Subject participation

Career advice
in schools

Influences of
geographic location



Education outcomes

Achievement in
literacy and numeracy

Attitudes to school

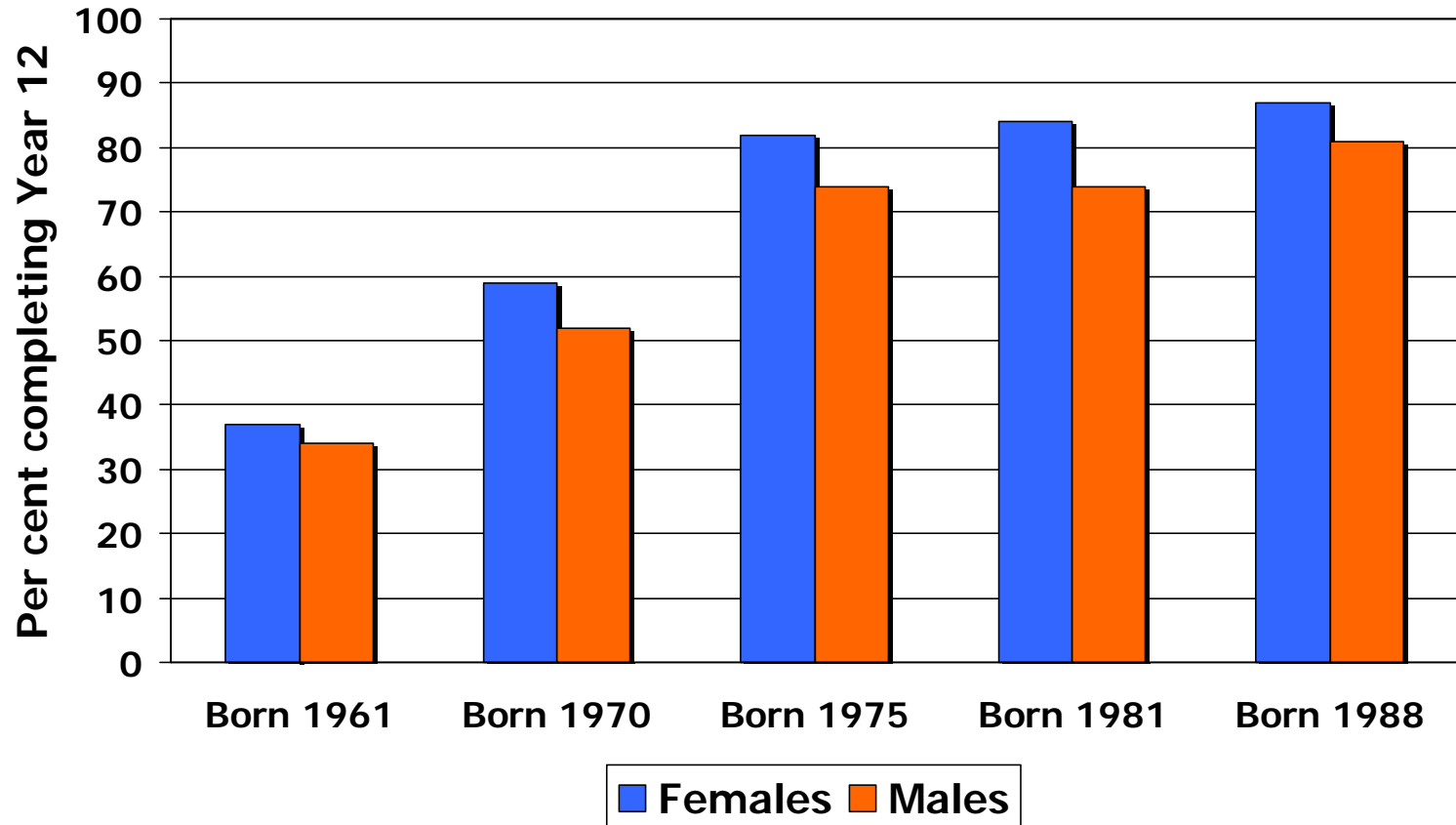
Completion of
Year 12

Subject participation

Career advice
in schools

Influences of
geographic location

Completing Year 12





Education outcomes

Achievement in
literacy and numeracy

Attitudes to school

Completion of
Year 12

Subject participation

Career advice
in schools

Influences of
geographic location



Education outcomes

Achievement in
literacy and numeracy

Attitudes to school

Completion of
Year 12

Subject participation

Career advice
in schools

Influences of
geographic location

Subject participation by senior secondary students

Subject	Year 12 in			
	1990	1993	1998	2001
English	18.1	18.2	18.7	19.5
Mathematics	17.5	17.9	17.7	17.4
Humanities & Social Sciences	11.9	9.6	8.8	7.6
Economics & Business	11.6	11.3	9.3	9.7
Sciences	17.0	17.2	15.2	14.1
Arts	6.6	6.9	6.6	7.8
LOTE	2.0	1.8	1.9	1.9
Technology	6.9	10.6	13.5	14.2
Health & Physical Education	2.2	3.9	5.1	4.9

Consequences of subject choice

- Students who study in Years 12 and 13 the physical sciences tend to have favourable social outcomes (less likely to enter part-time work or out of the labour force, and no further study)
- Those who study business, other sciences and technical-vocational courses tend to enter a mix of studies (including apprenticeships and traineeships)
- Those in service-vocational and 'mixed/eclectic' courses are least likely to enter further study

Three generations of outcomes

Education

Employment

Social

Employment outcomes

Entering the workforce

Working while
studying

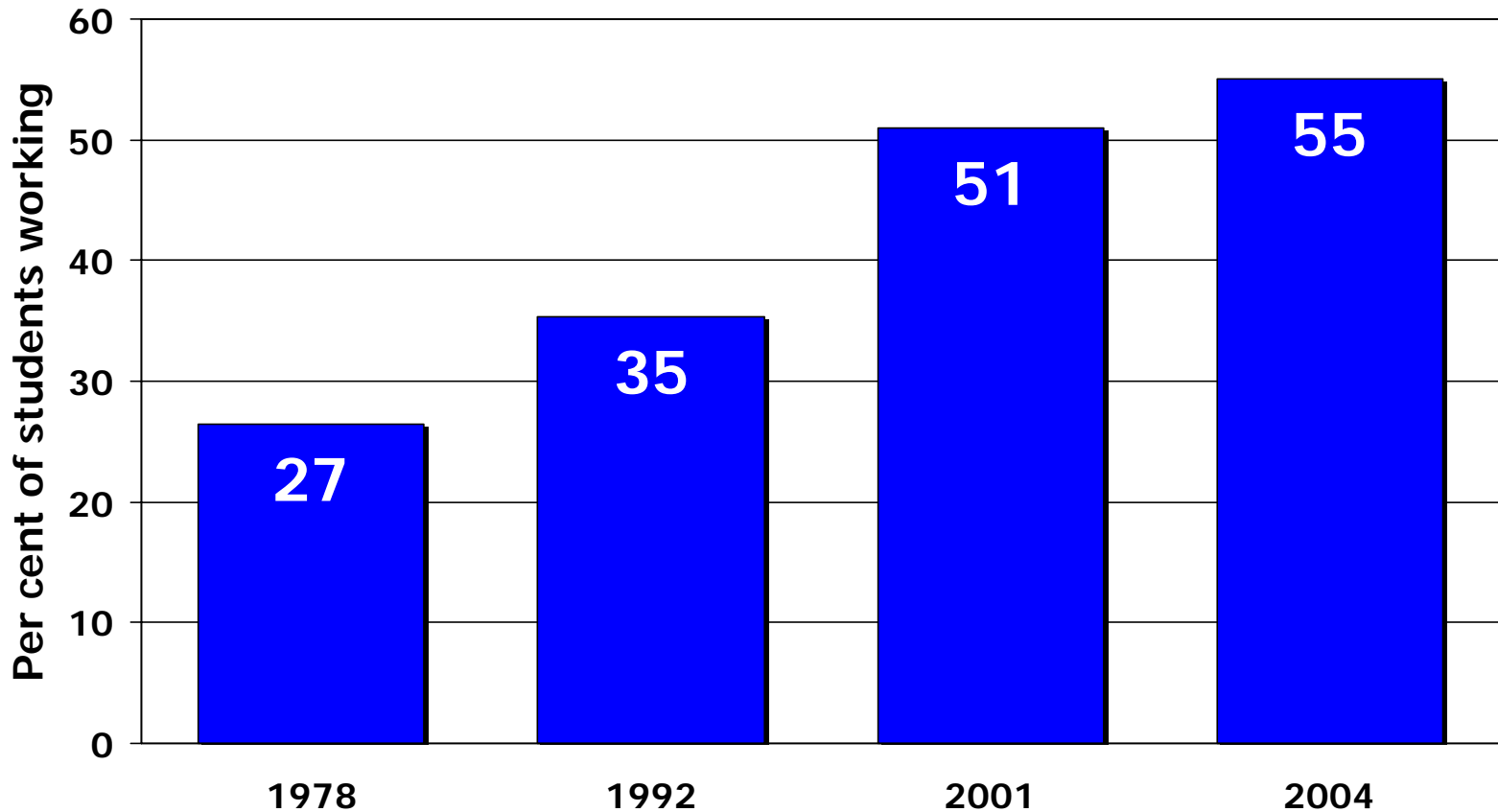
Occupations and
earnings

Firm-based training

Work satisfaction

Unemployment/
outside the labour force

Students and part-time work: Years 11 & 12



Employment outcomes

Entering the workforce

Working while
studying

Occupations and
earnings

Firm-based training

Work satisfaction

Unemployment/
outside the labour force

Employment outcomes

Entering the workforce

Working while
studying

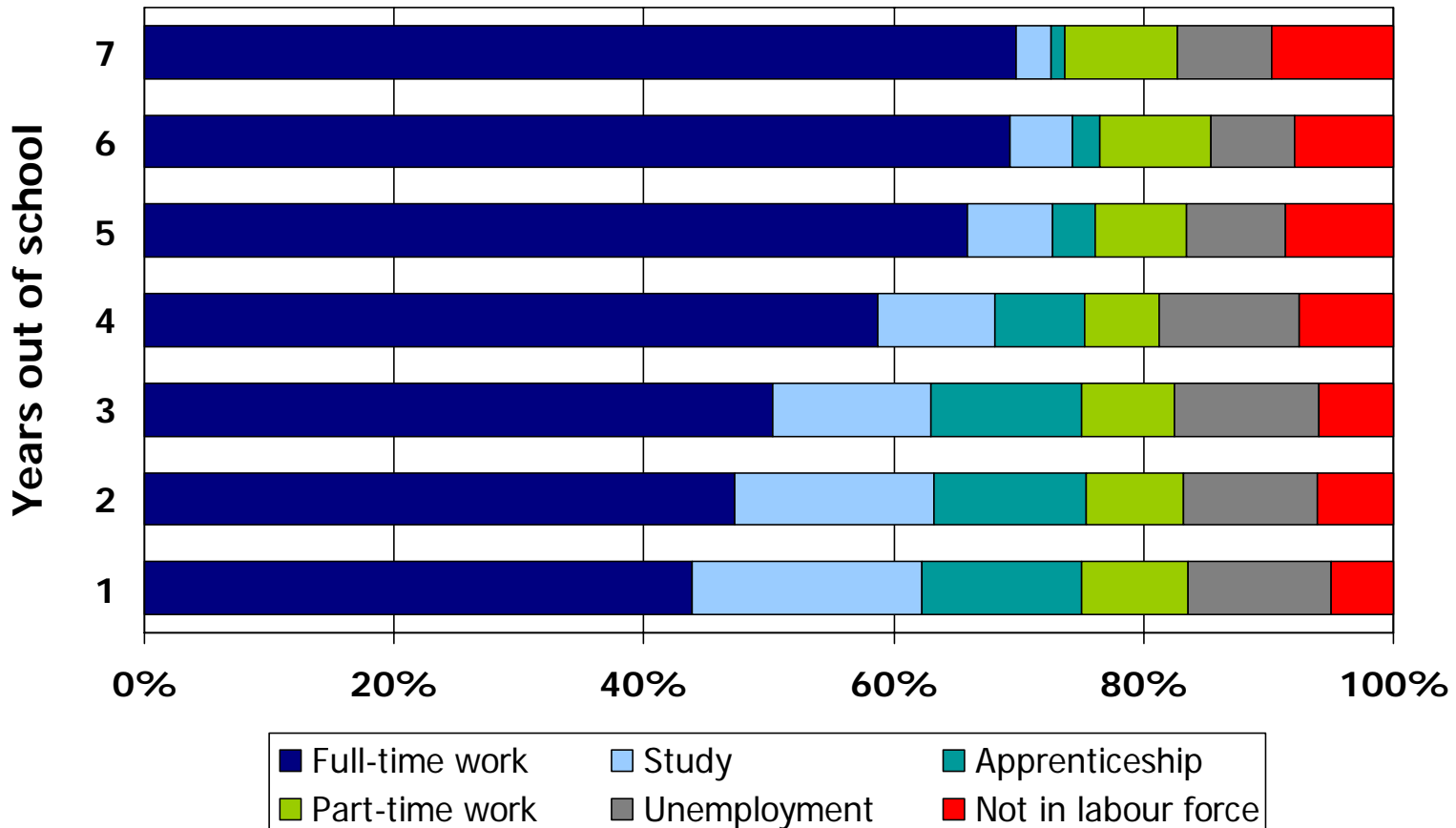
Occupations and
earnings

Firm-based training

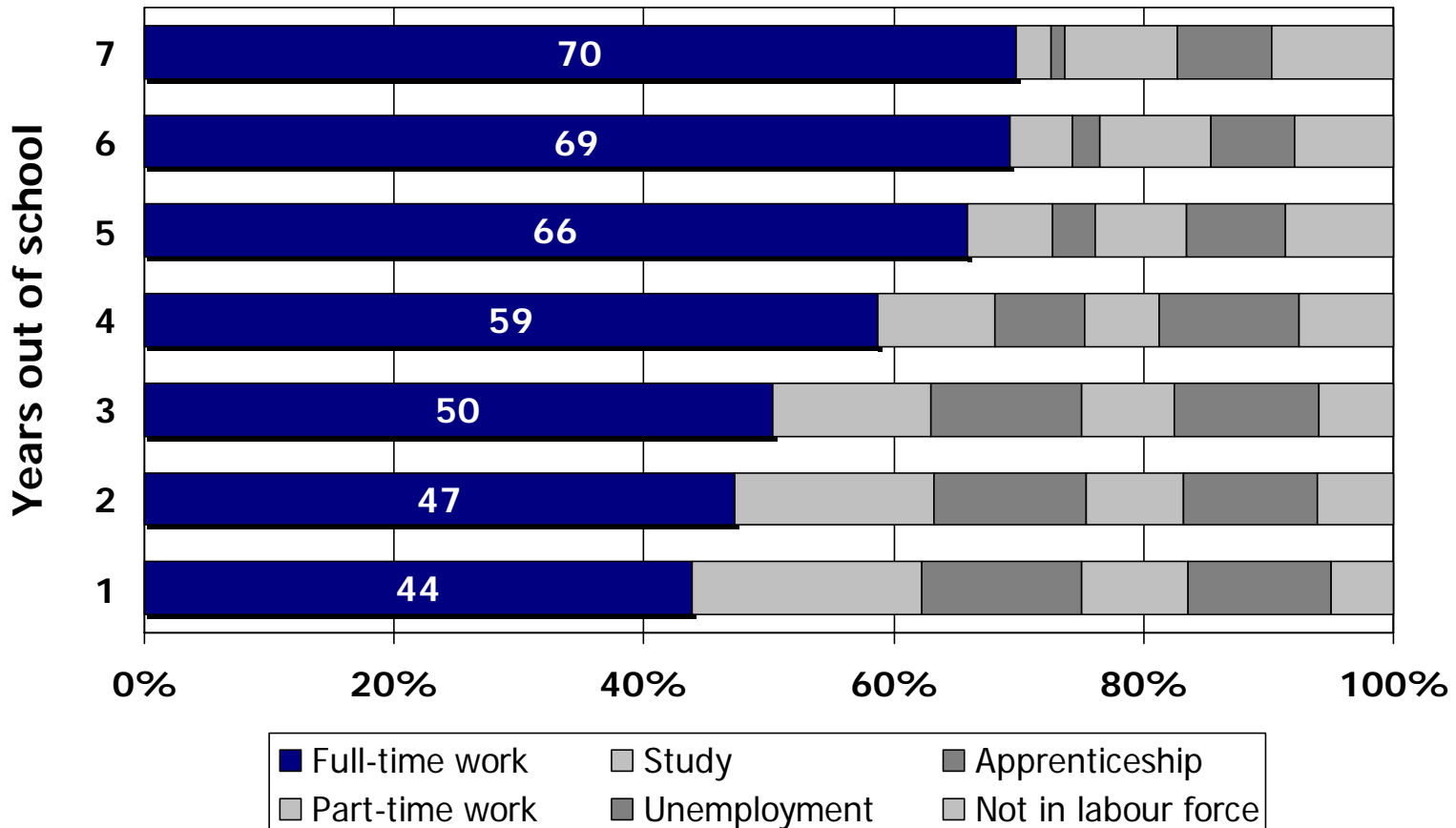
Work satisfaction

Unemployment/
outside the labour force

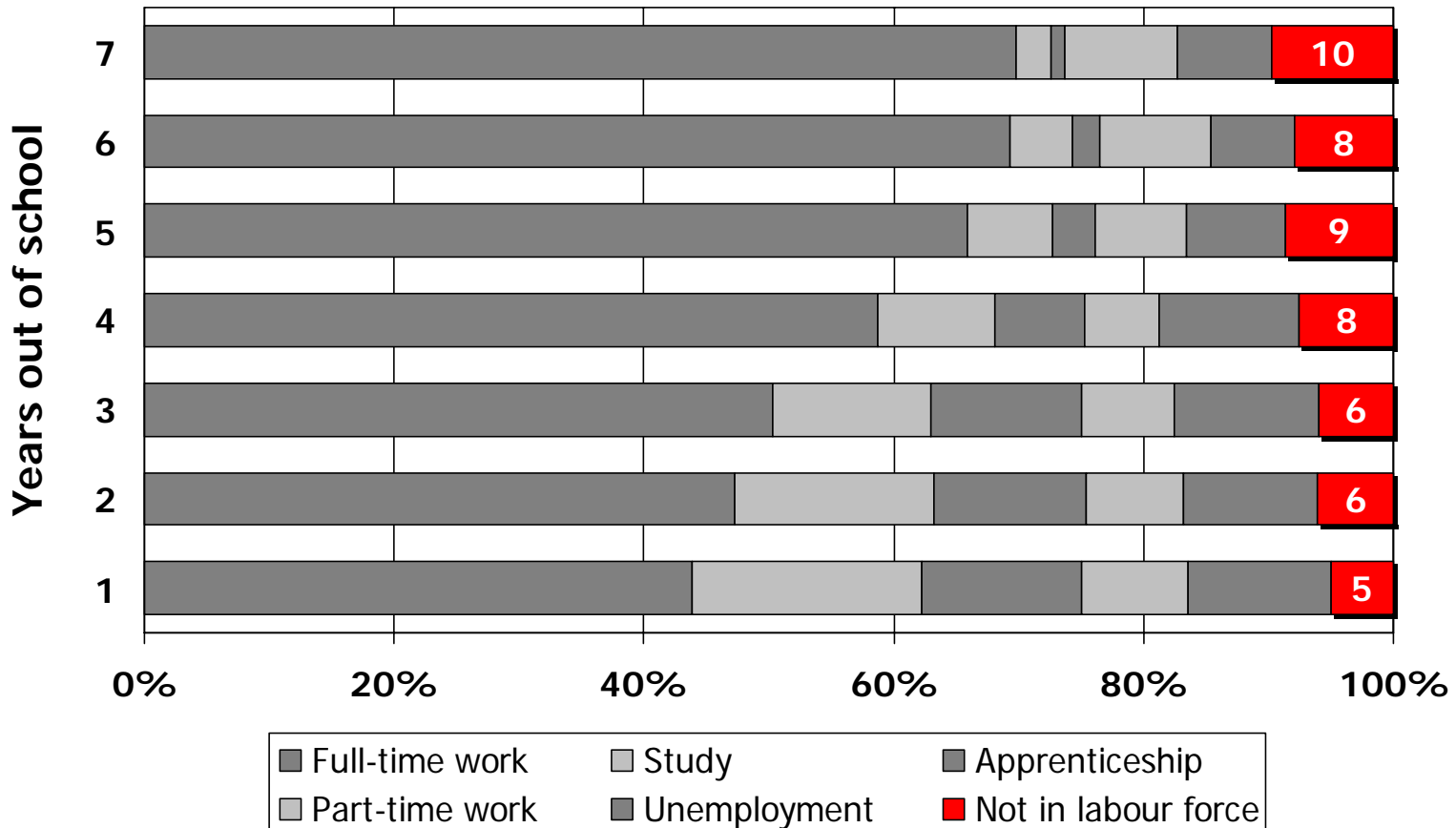
From school to work: late 1980s/early 1990s (non-university)



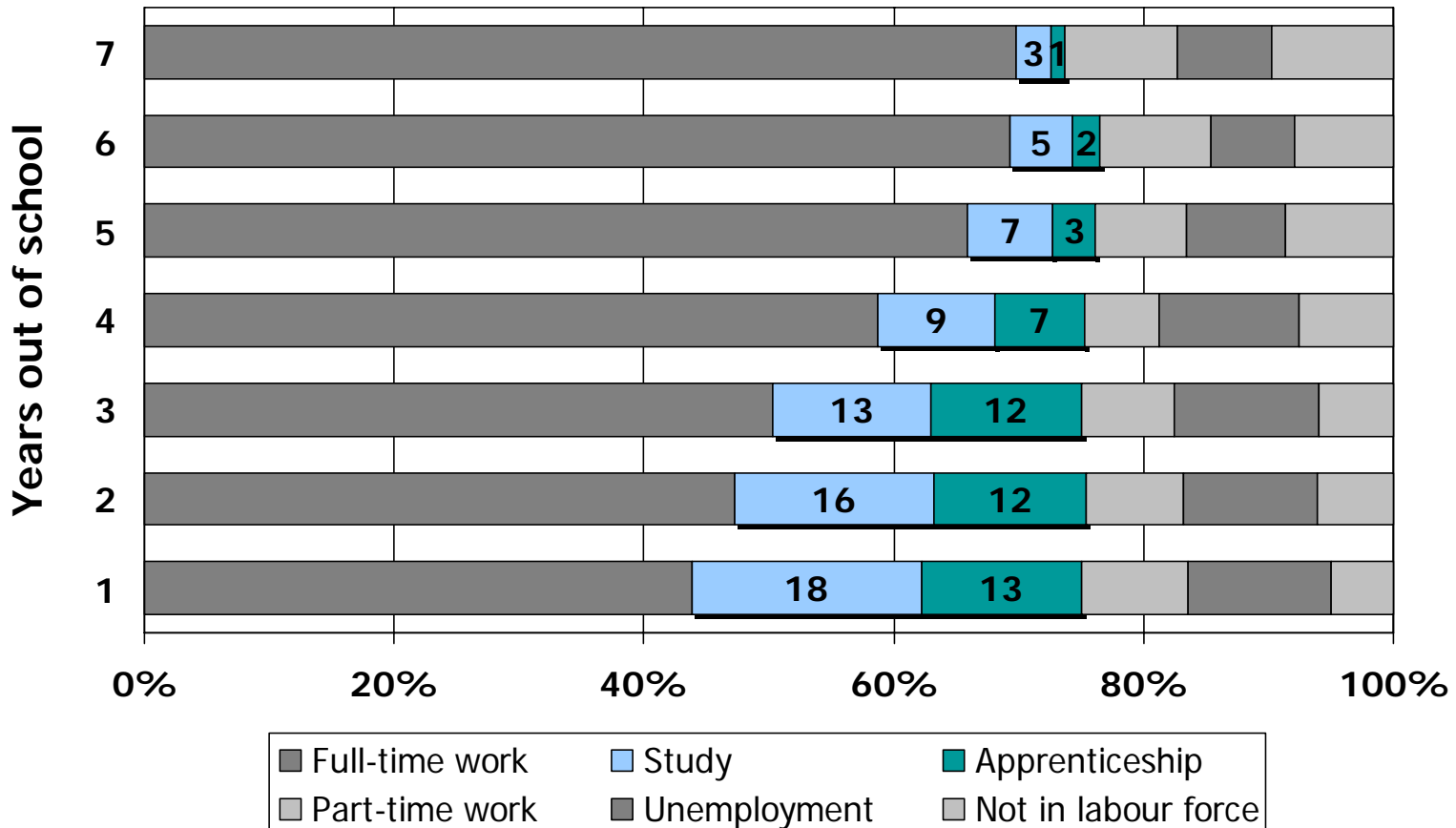
From school to work: late 1980s/early 1990s (non-university)



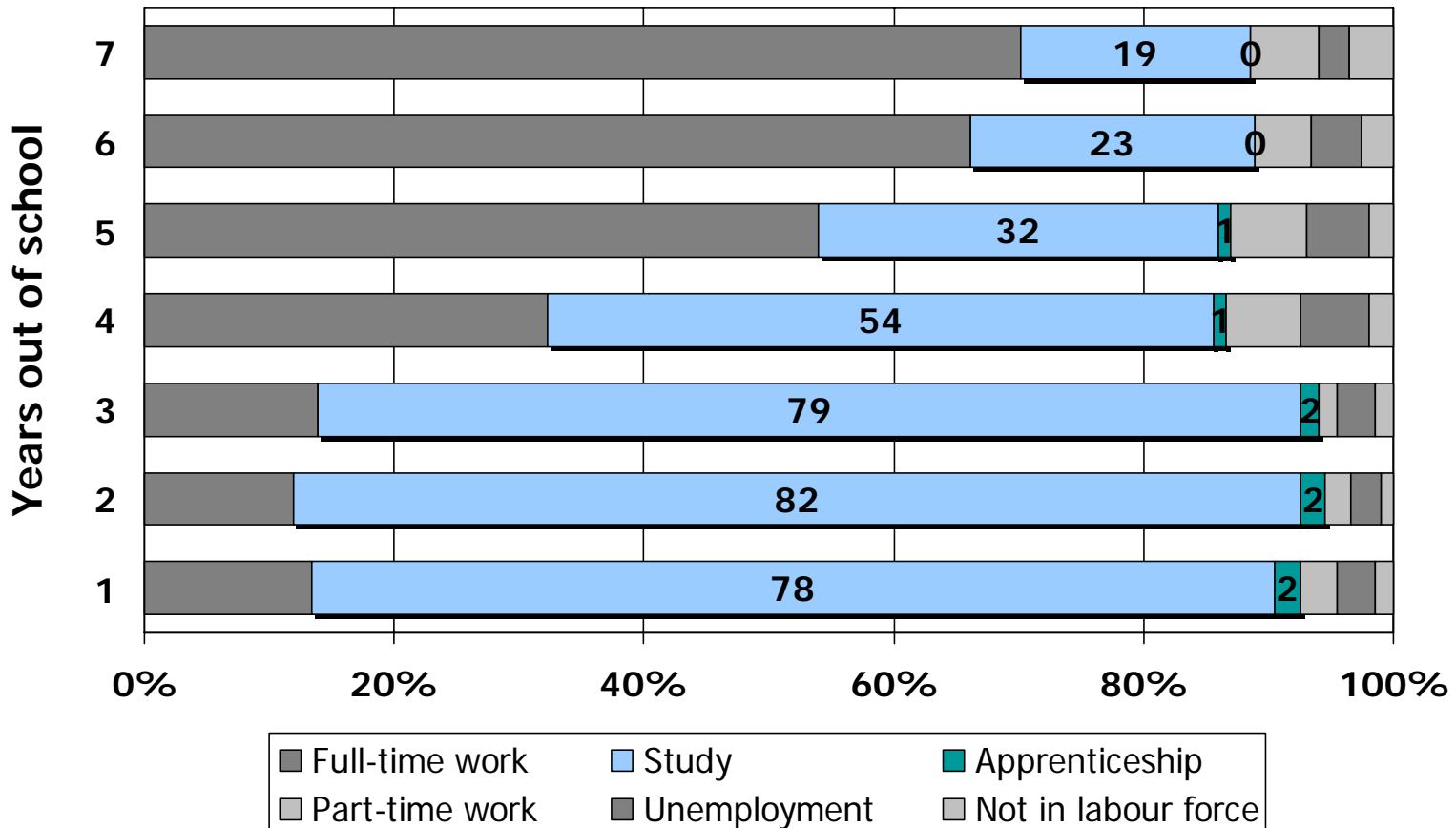
From school to work: late 1980s/early 1990s (non-university)



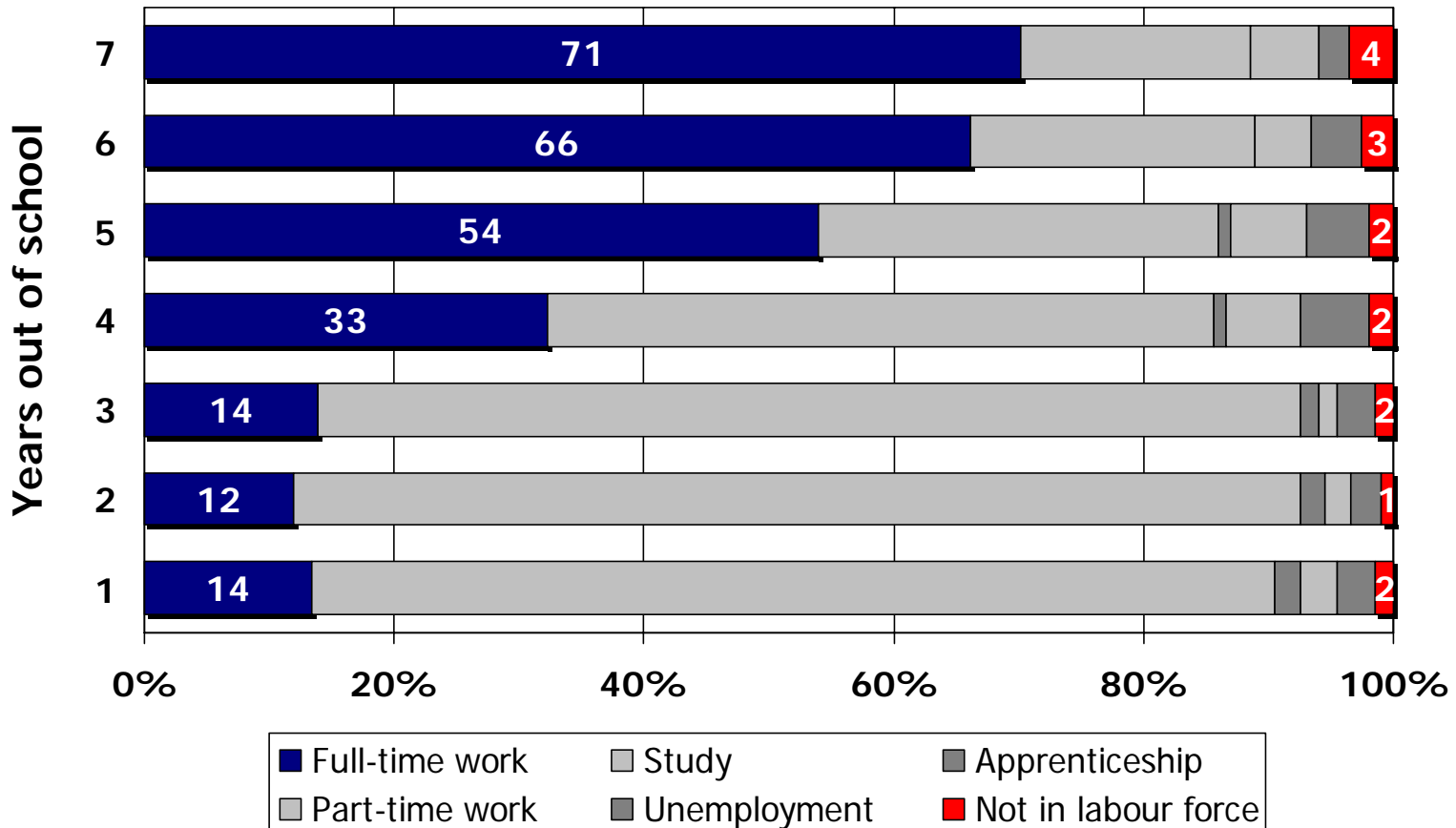
From school to work: late 1980s/early 1990s (non-university)



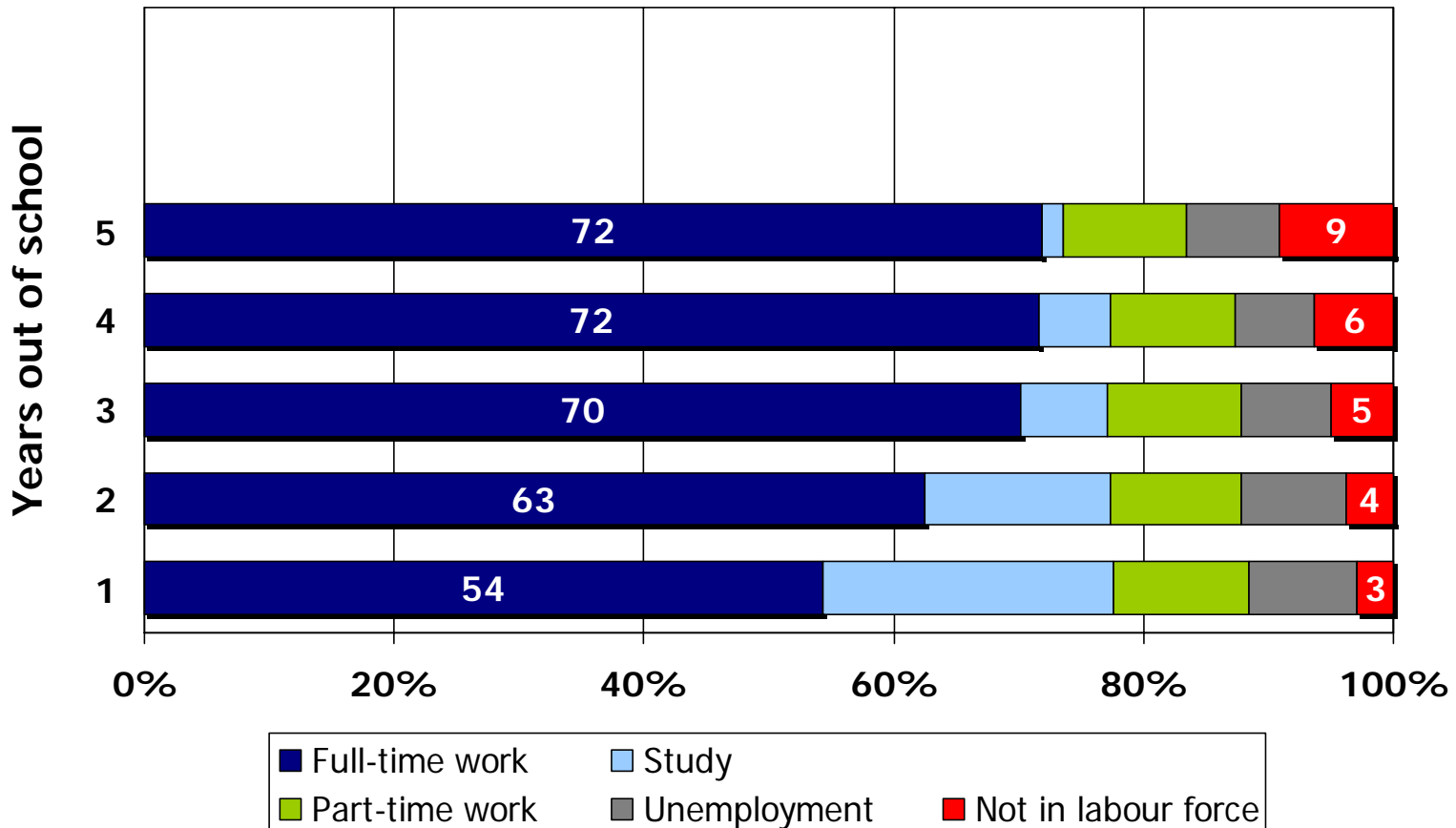
From school to work: late 1980s/early 1990s (university)



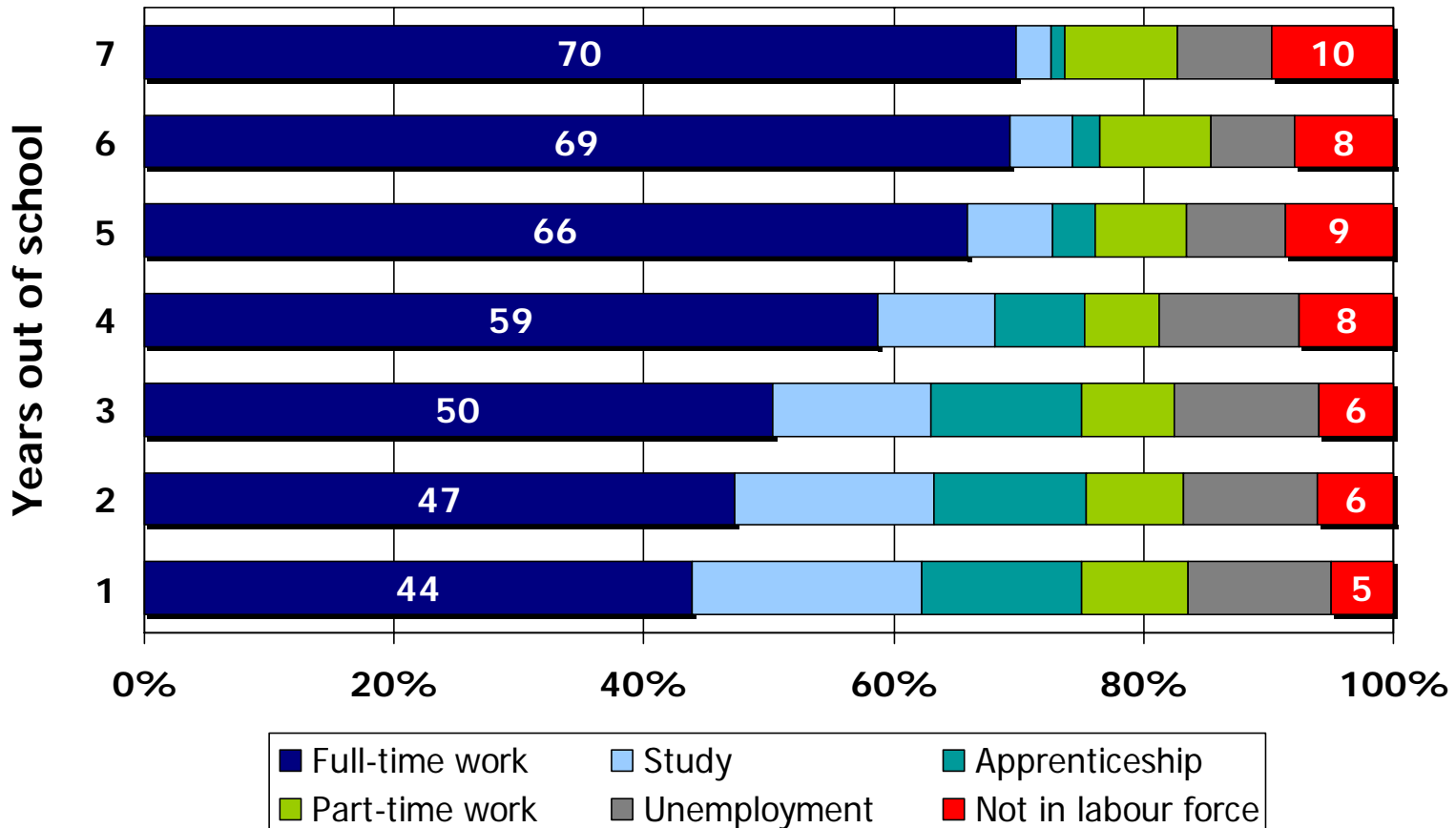
From school to work: late 1980s/early 1990s (university)



From school to work: late 1990s/early 2000s (non-university)



From school to work: late 1980s/early 1990s (non-university)



Employment outcomes

Entering the workforce

Working while
studying

Occupations and
earnings

Firm-based training

Work satisfaction

Unemployment/
outside the labour force

Employment outcomes

Entering the workforce

Working while
studying

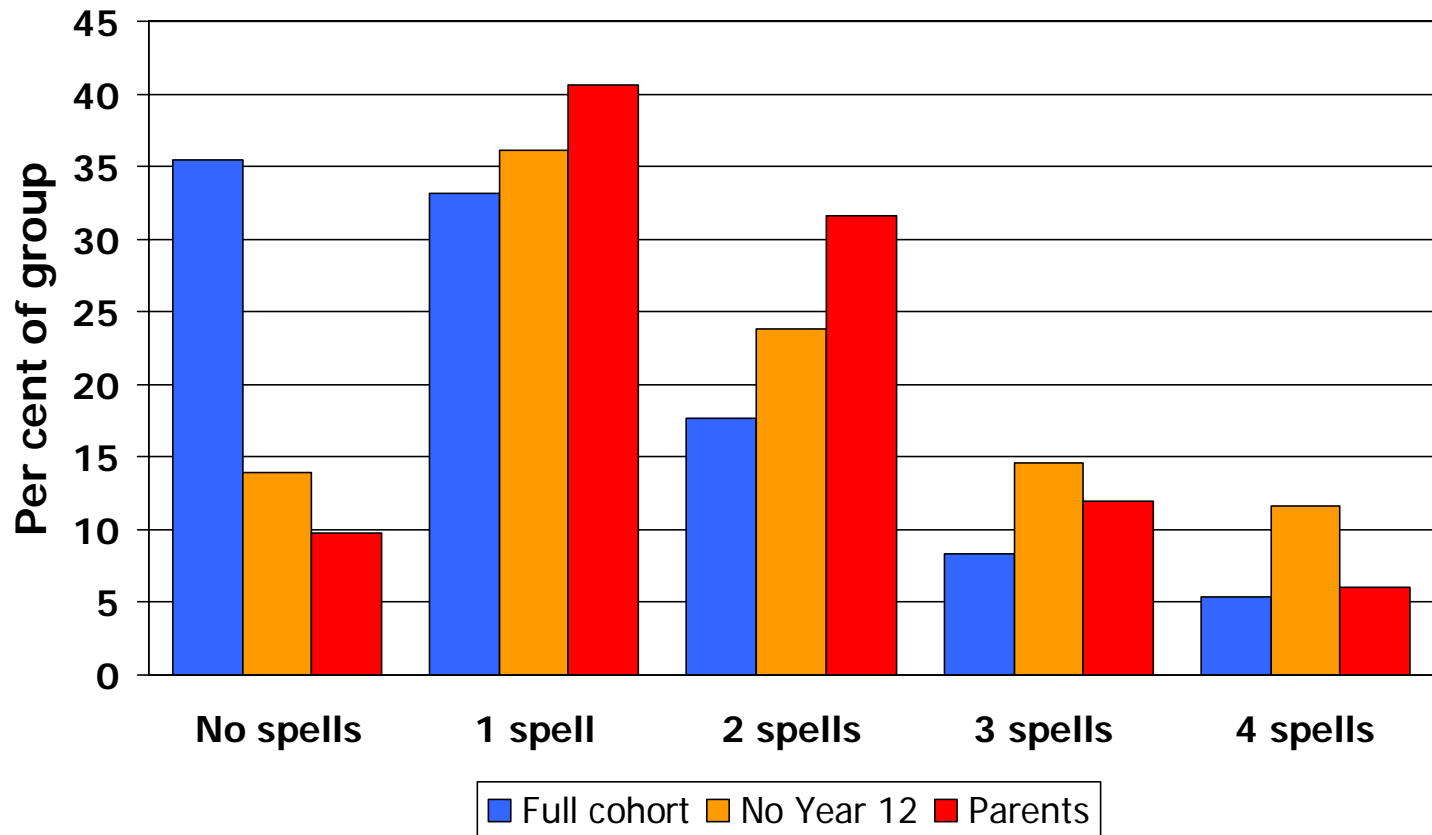
Occupations and
earnings

Firm-based training

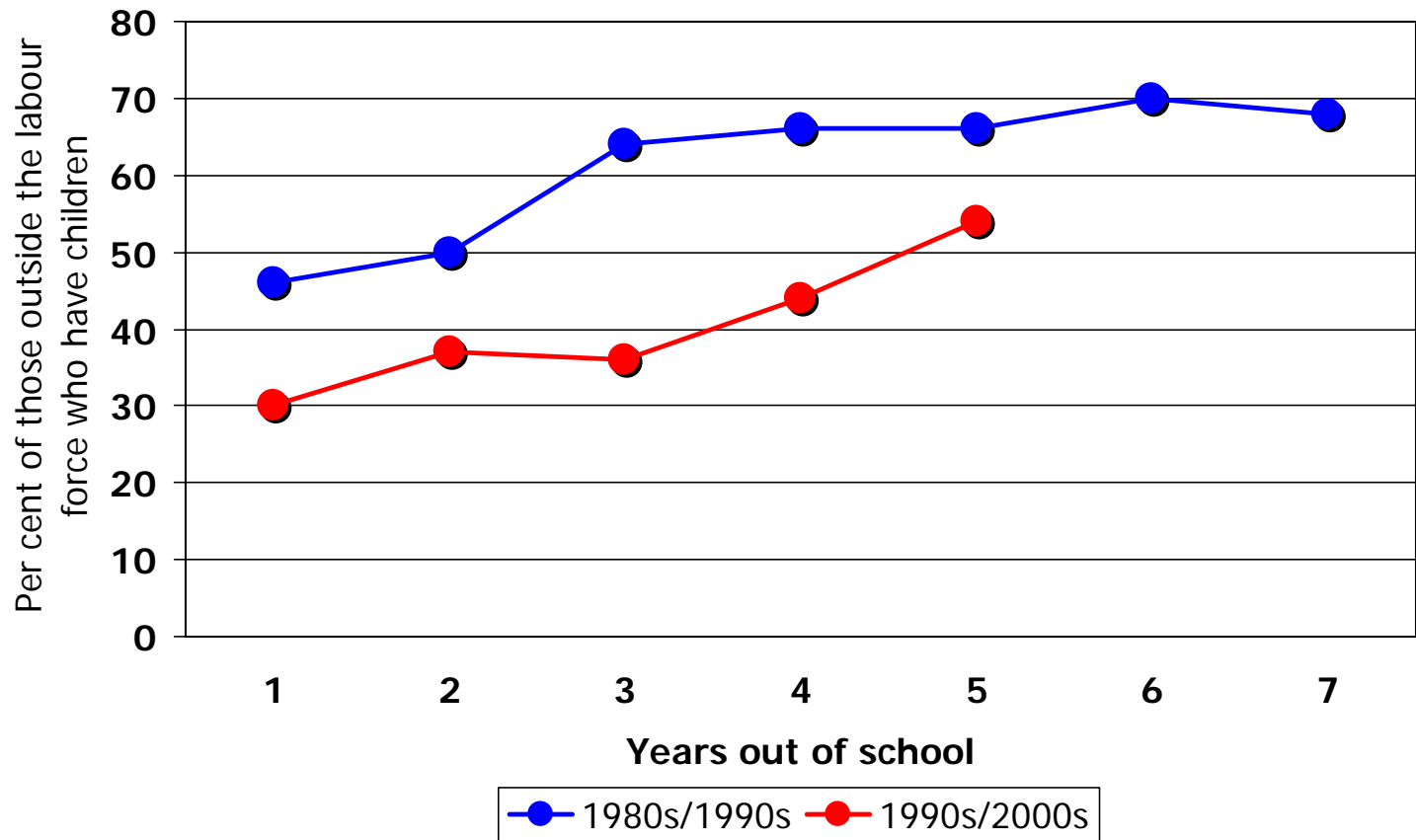
Work satisfaction

Unemployment/
outside the labour force

Outside the labour force: late 1990s/early 2000s



Outside the labour force: caring for children



Three generations of outcomes

Education

Employment

Social

Social outcomes

Relationships

Leaving the nest

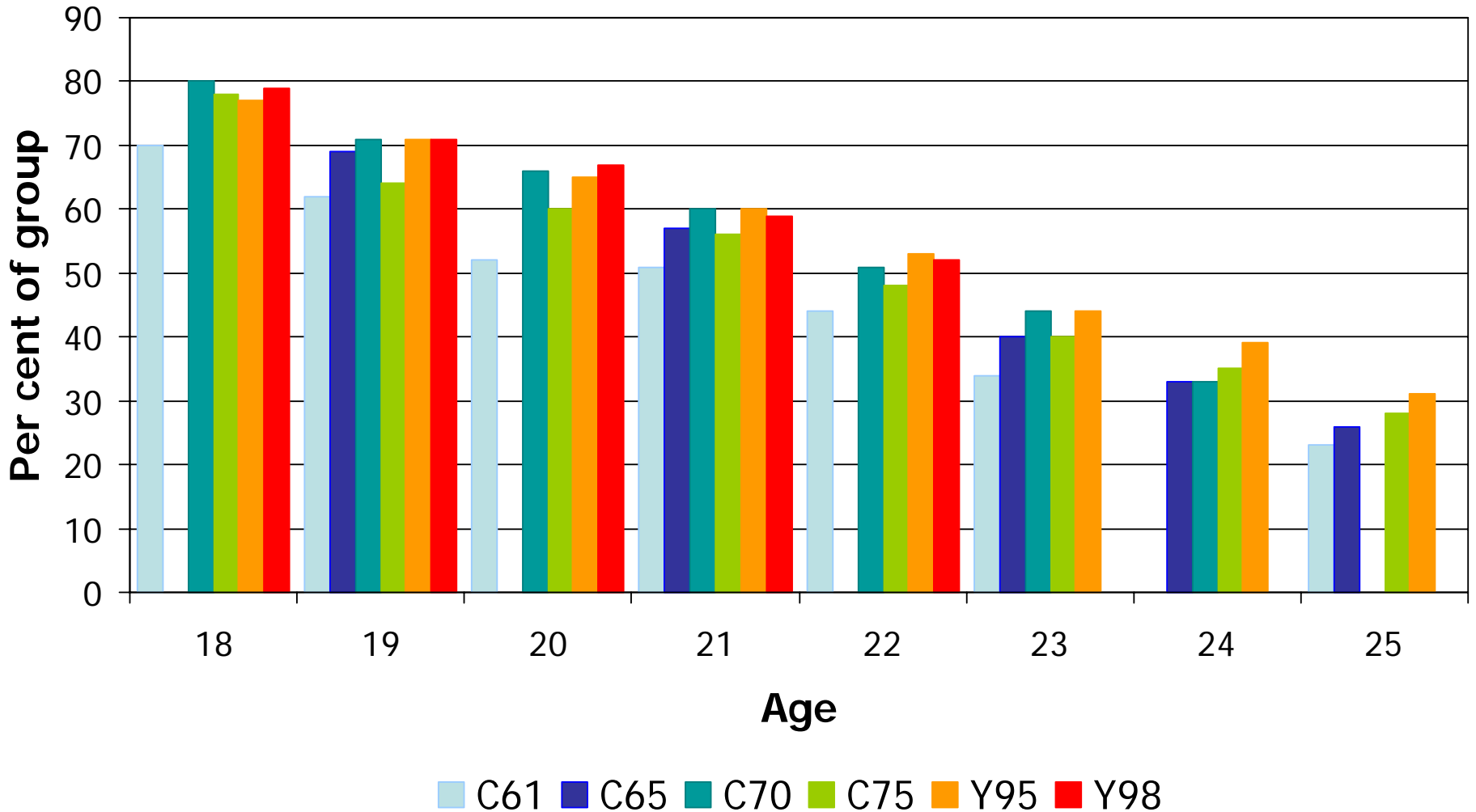
Health & exercise

Caring for others

Life satisfaction

Influences of
geographic location

Living in the parental home



Social outcomes

Relationships

Leaving the nest

Health & exercise

Caring for others

Life satisfaction

Influences of
geographic location

Social outcomes

Relationships

Leaving the nest

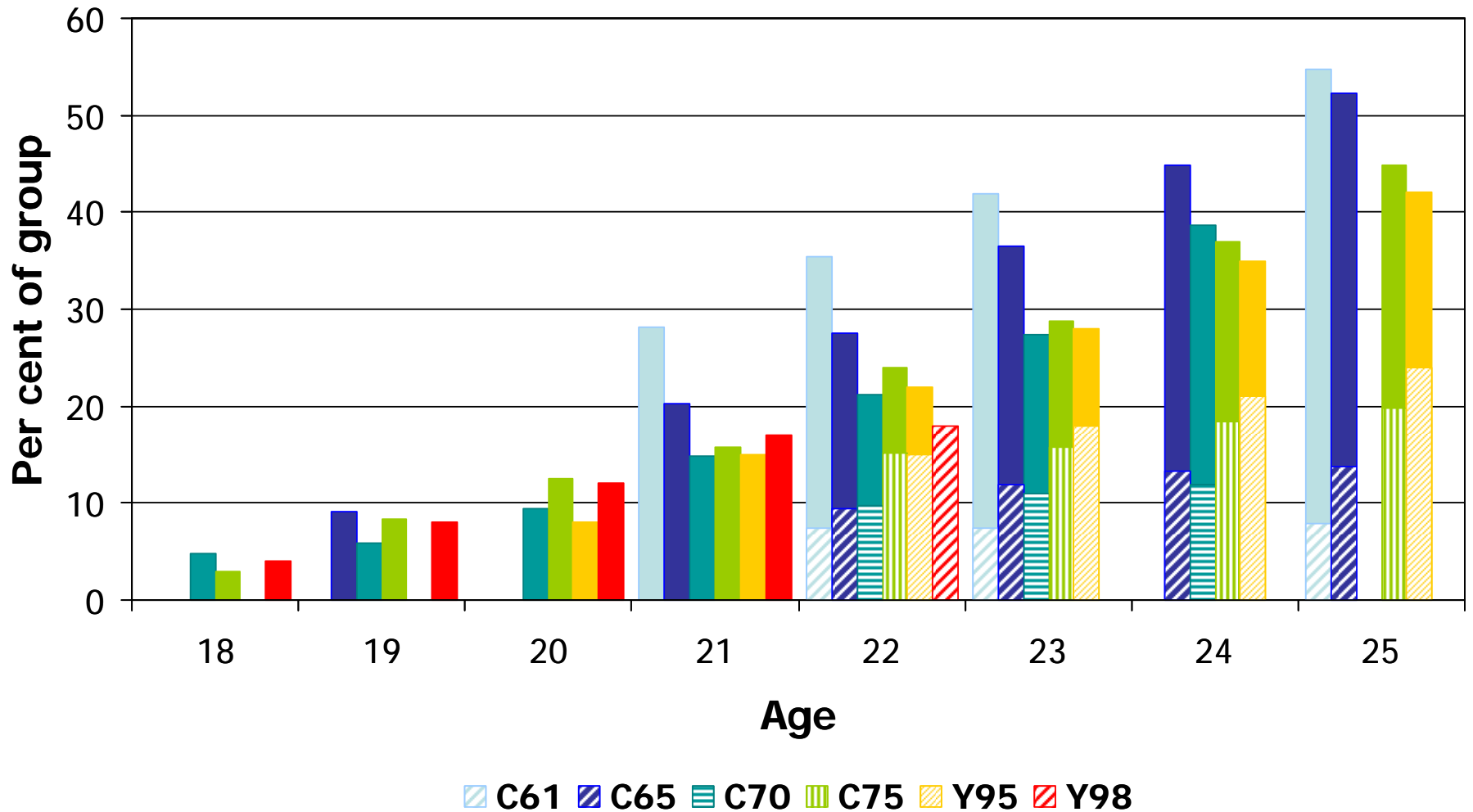
Health & exercise

Caring for others

Life satisfaction

Influences of
geographic location

Relationships de facto



Social outcomes

Relationships

Leaving the nest

Health & exercise

Caring for others

Life satisfaction

Influences of
geographic location

Social outcomes

Relationships

Leaving the nest

Health & exercise

Caring for others

Life satisfaction

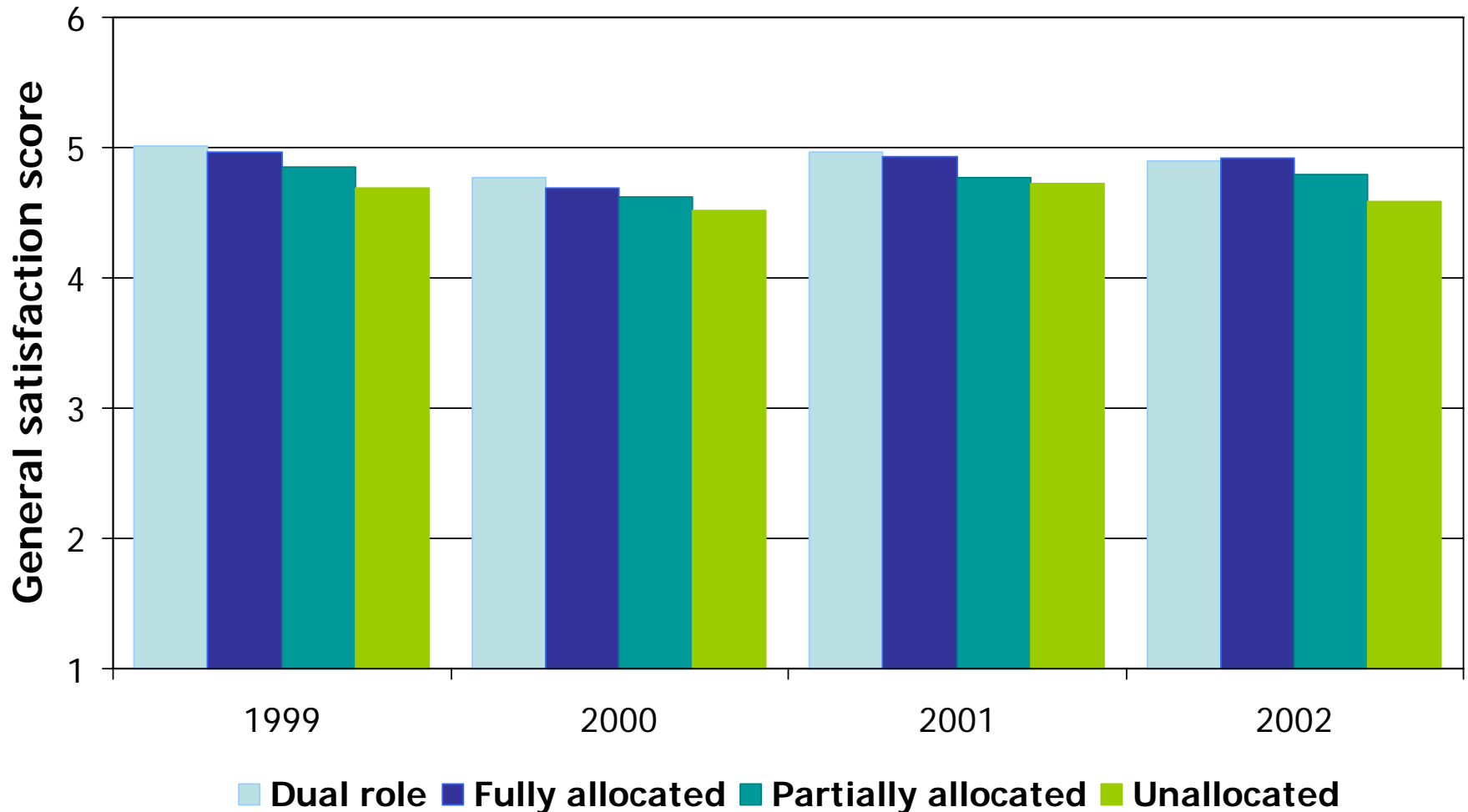
Influences of
geographic location



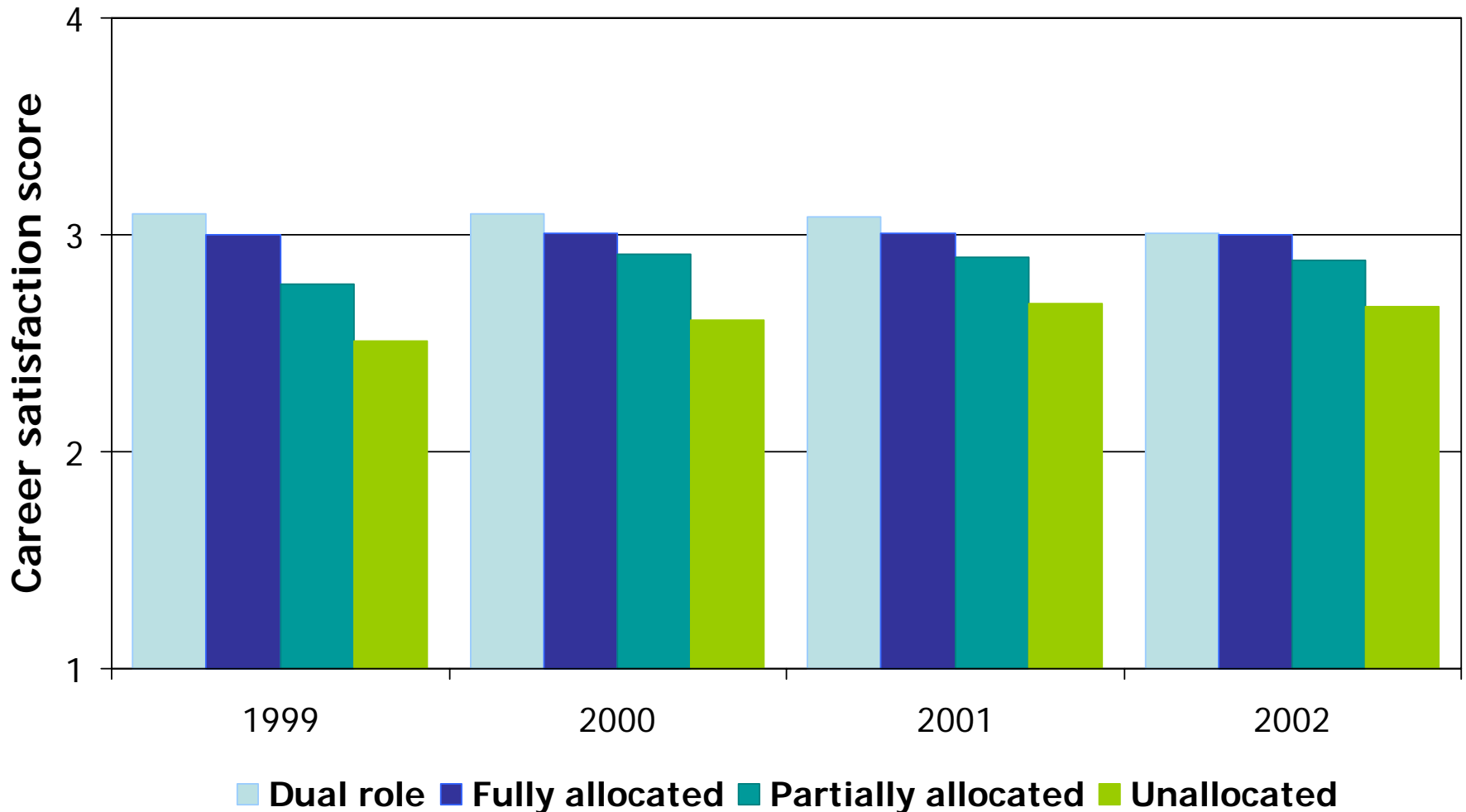
Life satisfaction

- Young women happier than young men
- Gender gap has decreased over time and across groups
- Married happier than de facto
- De facto happier than singles
- Living with parents and happiness:
 - Negative relationship for older groups
 - Positive relationship for younger groups

General satisfaction and activity level



Career satisfaction and activity level



Relationships between satisfaction and activity level

- Changes that increase time committed to study and/or work are related to increased career satisfaction
- Changes that decrease time committed to study and/or work are related to decreased career satisfaction
- Some evidence of 'selection' effects
 - Higher levels of satisfaction are associated with improved employment outcomes

The future?

Education

Employment

Social



Generation neXt: Education

- Year 12 or its vocational equivalent by age 19
- Informed subject choices
- Active and strategic learning pathways
- More options for post-school study

Generation neXt: Employment

- Entering the labour force
- Combining work and study
- Portable/transferable skills
- Spells out of the labour force





Generation neXt: Social

- Changes in relationships
- Changes in living arrangements
- Relationship between education and employment outcomes and social outcomes
- Growing interest in 'values' and 'social capital'



LSAY reports available from

www.acer.edu.au